



Bletchley Pathfinder (Fuller)

Presentation to the Health and Care Partnership on 20 September 2023

Recommendations

1. Agree to formally start the Bletchley Pathfinder (18 months)
2. Agree the six proposed areas of work
3. Ask the ICB to add 'Bletchley Pathfinder' to the MK Deal
4. Agree the proposed governance approach
5. Agree the indicative budget
6. Agree the broad approach to evaluation

Recap

What is this work trying to achieve?



To progress the Fuller recommendations

Streamlining access to care and advice

Provide more proactive, personalised care and support to people through a multi-disciplinary team approach

Help people to stay well for longer as part of a stronger focus on prevention of ill health

To address local partner priorities

For example...

Milton Keynes City Council

Everyone in Milton Keynes deserves to have the same opportunities and chances in life, where people are valued, feel safe and are encouraged to participate in their community and lead healthier, fulfilled lives.

Recap

What have we done so far?



22 February

The Health and Care Partnership...

- Considered the Fuller report
- Agreed to pilot neighbourhood working in one or two areas of Milton Keynes
- Asked the Joint Leadership Team to develop a more detailed proposal for the pilot

The Joint Leadership Team then...

- Carried out initial research on the level of need and reached a view that Bletchley would be suitable as the pilot area
- Developed a better picture of how other areas are approaching the Fuller report and the recommendations

13 June

The Health and Care Partnership...

- Agreed to select Bletchley as the area to pilot neighbourhood working
- Asked the Joint Leadership Team to prepare for a potential start of the Bletchley Pathfinder in September 2023

The Joint Leadership Team then...

- Undertook initial engagement work, meeting Primary Care Network leads and sending introductory letters to Bletchley partners
- Commissioned 13 work packages to inform the design of the Bletchley Pathfinder

20 September

The Health and Care Partnership...

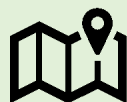
- Is asked to approve the start of the 18 month Bletchley Pathfinder in line with the design set out in this presentation

Designing the Bletchley Pathfinder

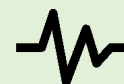
Informing our proposals



13 work packages have informed the design, including...



Carrying out a detailed local needs assessment



Gauging support from local NHS organisations



Talking with the local voluntary and community sector



Finding out the level of interest from schools



Looking at the role of community pharmacies



Getting feedback from the two Town Councils



Mapping the local public sector workforce



Background work on roles and ways of working



Asking local residents for their thoughts

Contact **Rebecca Green** to take a look at any of the work packages

Designing the Bletchley Pathfinder

The first three proposals



What we found out...

Very broad support for working more closely together from the NHS family, police, schools, the city council, town councils and the voluntary sector

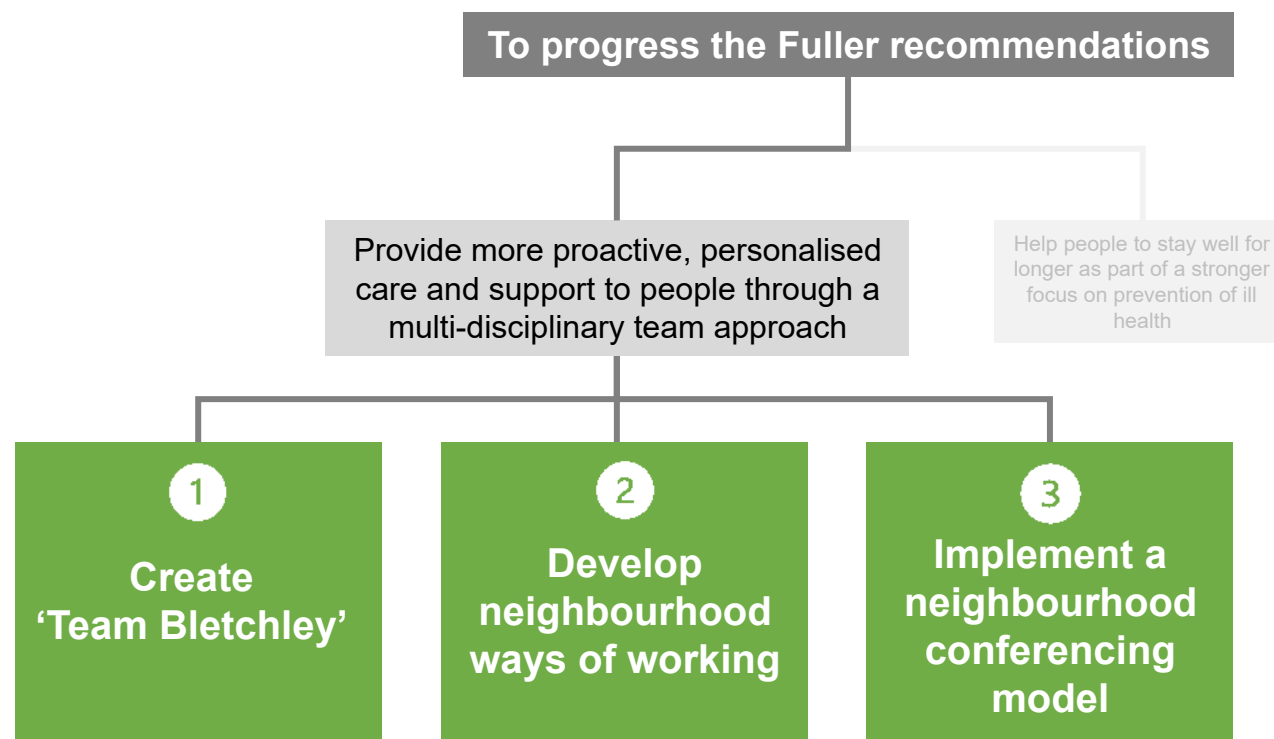
Lack of awareness of what different organisations do, how they operate and could interact better

There are some examples of multi-agency work taking place in the neighbourhood, but they are not consistent or could be developed further

Crime and the fear of crime a theme in resident feedback

Local people want to see better professional co-ordination

What we are proposing initially...



Designing the Bletchley Pathfinder

The proposals



1

Create
'Team Bletchley'

- Focused on building relationships and trust between professionals
 - Would create multiple opportunities for engagement and dialogue
 - Some universal events, some targeted – for example older adults
 - Products like an 'Induction to Bletchley' could be developed
 - Inclusive - open to public and voluntary sector organisations to join
-

2

Develop
neighbourhood
ways of working

- All about agreeing the best ways of working together in Bletchley
 - Could resemble detailed operational procedures or something looser
 - Focus on how different sectors interact (for example schools and health)
 - Will require a level of organisational sign up and commitment
 - Some form of monitoring and management probably inevitable
-

3

Implement a
neighbourhood
conferencing
model

- A way of addressing issues where multi-agency involvement is required
- Could be family-focused, or focused on a wider issue
- Standardised, well understood model
- Will need to be clear how it relates to other panel processes
- Will need active management and facilitation

Designing the Bletchley Pathfinder

The second three proposals



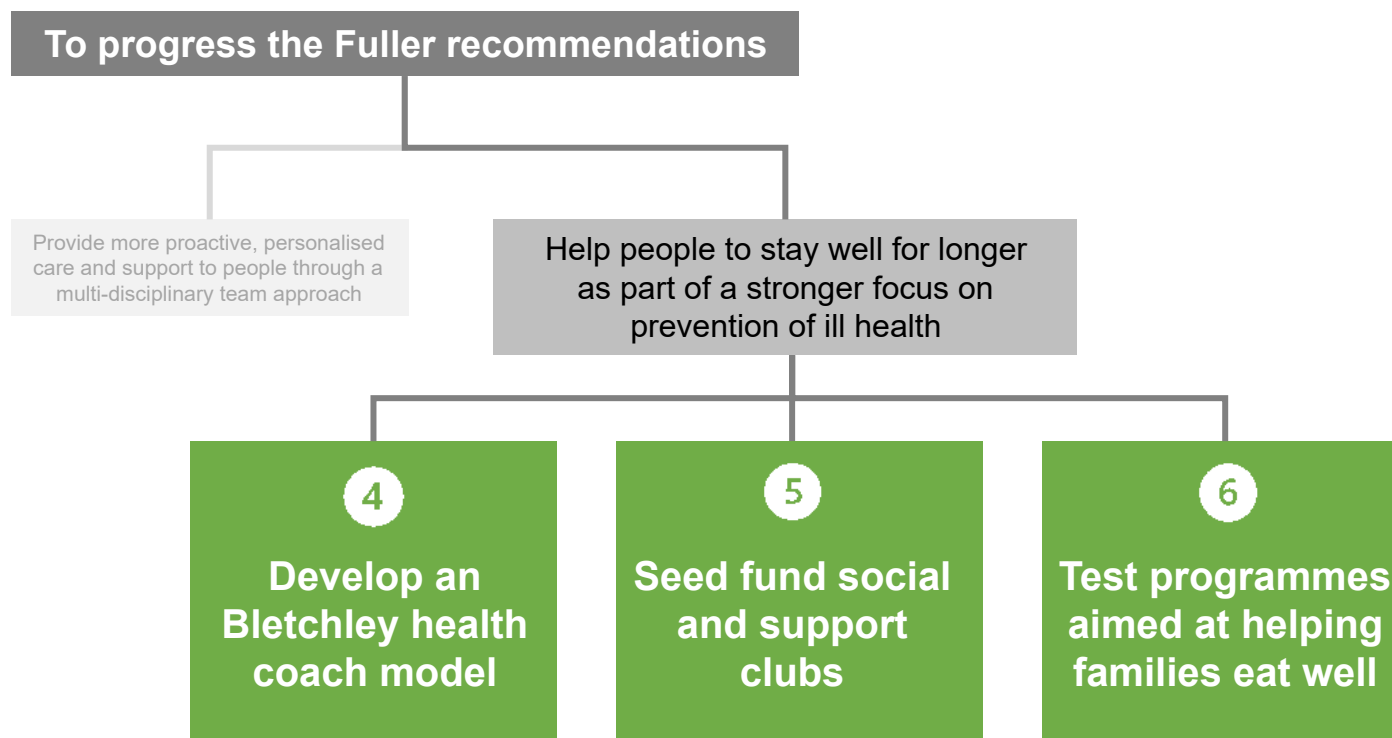
What we found out...

Health inequalities are worse across the board, but obesity and smoking rates stand out as much worse than elsewhere

Too much use of emergency health care and issues with out patients/planned care engagement. High number of residents have long term conditions so helping people have more control over their health and care is an important issue

Local people liked the idea of a health coach, but also want to see more support services

What we are proposing initially...



Designing the Bletchley Pathfinder

The proposals



4

Develop an
Bletchley health
coach model

- Based on health coaching model but with flexibility to innovate
 - Focused on people with existing conditions
 - Likely to be an 'add-on' to existing roles to achieve scale
 - Some existing roles may be suitable for conversion to health coach
 - Backed by training and support
-

5

Seed fund social
and support
groups

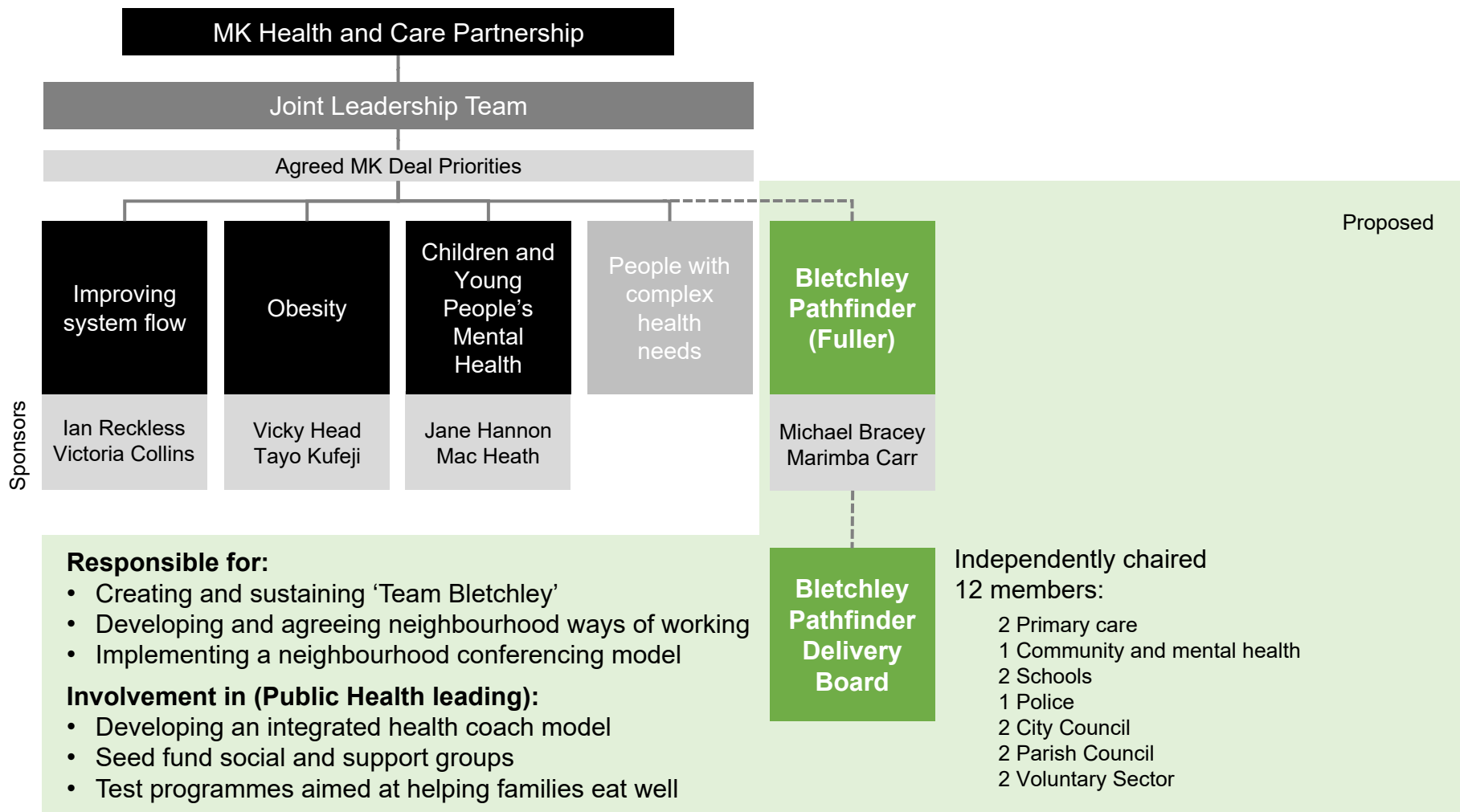
- Designed to fund both small social clubs and health support groups
 - Focus on lower cost clubs and groups and supporting new activities
 - Funding open to both residents and organisations
 - Simple application and reporting processes
 - Based on the successful 'Lakes Clubs' model
-

6

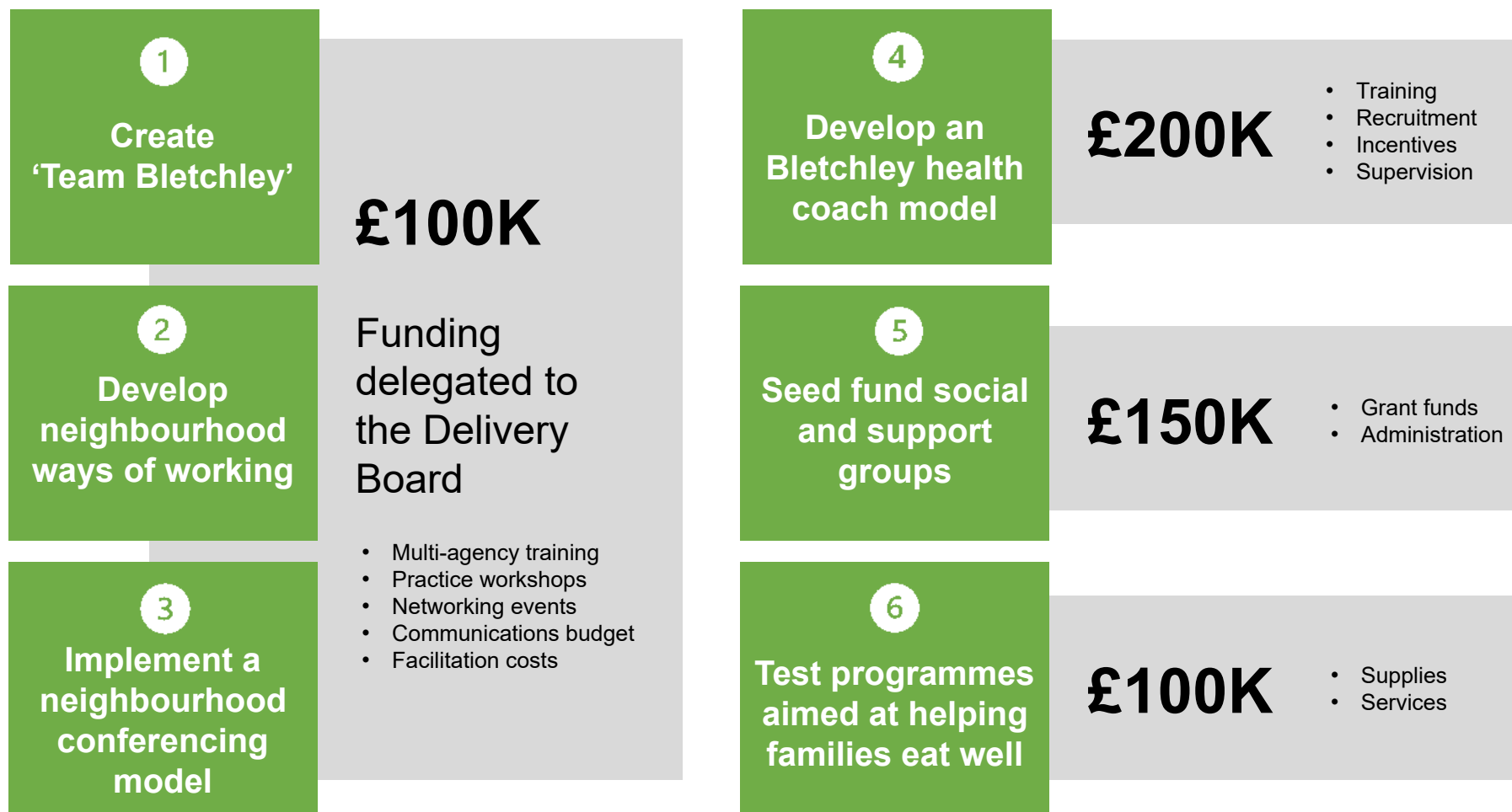
Test programmes
aimed at helping
families eat well

- Based on a 'test and learn' approach, co-produced with local people
- Targeted, focussing on families with young children
- Emphasis on improving food skills and access to healthier food
- Partnership approach including schools, children's centres, primary care
- Close working with partners such as and SOFEA and MK Food Bank

Designing the Bletchley Pathfinder Governance



Designing the Bletchley Pathfinder Governance – Indicative budget



Designing the Bletchley Pathfinder

Evaluation proposals



1

**Create
'Team Bletchley'**

Sentiment tracking amongst professionals (regular engagement)

2

**Develop
neighbourhood
ways of working**

Adherence with agreed ways of working (exception reporting)

3

**Implement a
neighbourhood
conferencing
model**

Attendance and participation in neighbourhood conferencing, tracking outcomes

4

**Develop an
Bletchley health
coach model**

Record keeping by coaches demonstrating change, some record sampling

5

**Seed fund social
and support
groups**

Numbers of groups and participants recorded. Qualitative report produced after twelve months.

6

**Test programmes
aimed at helping
families eat well**

Project level evaluation will report on impact of interventions and focus on learning